

COMBINATION BASIC FILL IN PRACTICE 2

DRUMMATES

1



2



3



4



5



6



7



8



The image displays eight numbered drum exercises, each consisting of two staves. The top staff of each exercise contains a series of 'x' marks representing cymbal hits, while the bottom staff contains a drum line with quarter notes and eighth notes. Exercises 1 through 6 feature a 4/4 time signature, while exercises 7 and 8 are in 3/4 time. Exercises 1-6 include a 6-measure fill in the final measure, while exercises 7 and 8 feature a 4-measure fill. The exercises are arranged vertically, with the number 1 at the top and 8 at the bottom.

9



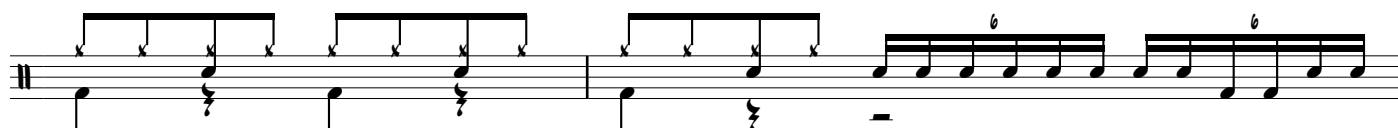
10



11



12



13



14



15

